

Validation data for THP1-Dual™ hTLR8 cells

<https://www.invivogen.com/thp1-dual-htlr7-htlr8>

For research use only

Version 23C24-AK

THP1-Dual™ hTLR8 cells were generated from the THP1-Dual™ cell line through the stable overexpression of the human Toll-like receptor 8 (hTLR8), as verified by Western blot (Figure 1). Additionally, these cells feature two reporter genes allowing the simultaneous study of the NF- κ B pathway by monitoring the activity of an inducible SEAP (secreted embryonic alkaline phosphatase), and the IRF pathway by monitoring the activity of an inducible secreted Lucia luciferase. Due to the overexpression of hTLR8, THP1-Dual™ hTLR8 cells show high NF- κ B and IRF responses upon incubation with various TLR7/8- and TLR8-specific ligands, when compared to their parental cells (Figures 2 & 3). Of note, as THP-1 cells express endogenous levels of various TLRs, THP1-Dual™ - derived cells respond to the cognate ligands including Pam3CSK4, LPS, or flagellin.

Validation of hTLR8 overexpression

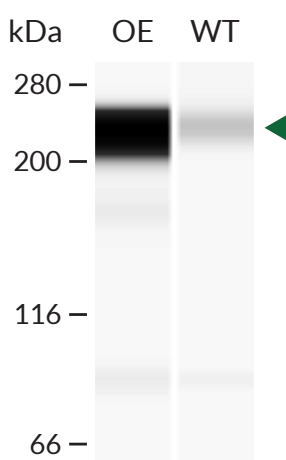


Figure 1. Validation of TLR8 overexpression (OE) in THP1-Dual™-derived cells. THP1-Dual™ (WT) and THP1-Dual™ hTLR8 cells (OE) were treated overnight with 20 ng/ml interferon (IFN)- γ to induce the expression of TLR8. Lysates from treated WT and OE cells were analyzed using an anti-human TLR8 antibody, followed by an HRP-conjugated anti-rabbit secondary antibody (JESS™). As expected, a band was detected in the IFN- γ treated OE cells lines in comparison with their parental (WT) cells (green arrow).

Functional validation of THP1-Dual™-derived cells (NF- κ B responses)

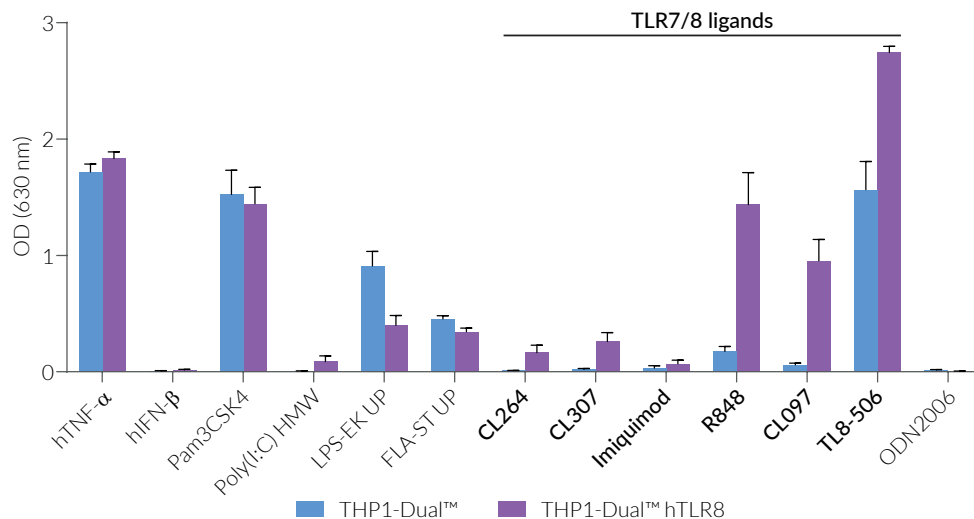


Figure 2. NF- κ B responses in THP1-Dual™ -derived cells. THP1-Dual™ and THP1-Dual™ hTLR8 cells were incubated for 24 hours with various TLR agonists: Pam3CSK4 (TLR2 ligand, 10 ng/ml), Poly(I:C) HMW (TLR3 ligand, 10 μ g/ml), LPS-EK Ultrapure (UP) (TLR4 ligand, 1 ng/ml), FLA-ST UP (TLR5 ligand, 1 μ g/ml), CL264 (TLR7 ligand, 1 μ g/ml), CL307 (TLR7 ligand, 1 μ g/ml), Imiquimod (TLR7 ligand, 10 μ g/ml), R848 (TLR7/8 ligand, 1 μ g/ml), CL097 (TLR7/8 ligand, 1 μ g/ml), TL8-506 (TLR8 ligand, 1 μ g/ml), and ODN 2006 (TLR9 ligand, 10 μ g/ml). Human TNF- α (1 ng/ml) was used as an NF- κ B-control. After 24h incubation, the NF- κ B-induced SEAP activity was assessed using QUANTI-Blue™. Data are shown as optical density (OD) at 630 nm (mean \pm SEM).

TECHNICAL SUPPORT

InvivoGen USA (Toll-Free): 888-457-5873
InvivoGen USA (International): +1 (858) 457-5873
InvivoGen Europe: +33 (0) 5-62-71-69-39
InvivoGen Asia: +852 3622-3480
E-mail: info@invivogen.com

 **InvivoGen**
www.invivogen.com

Functional validation of THP1-Dual™-derived cells (IRF responses)

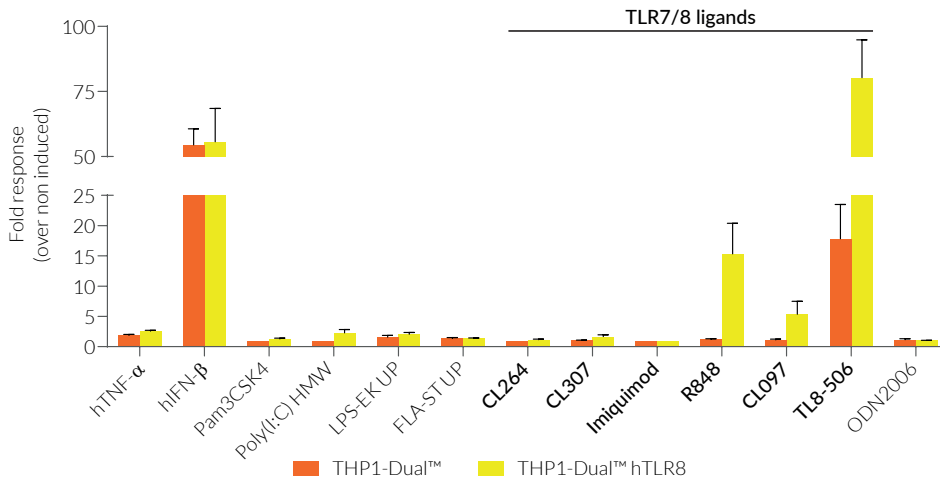


Figure 3. IRF responses in THP1-Dual™ -derived cells. THP1-Dual™ and THP1-Dual™ hTLR8 cells were treated as described above. Human IFN-β (1000 U/ml) was used as an IRF-positive control. After 24h incubation, the IRF response was assessed by measuring the activity of Lucia luciferase in the supernatant using QUANTI-Luc™. Data are shown in fold response over non-induced cells (mean ± SEM).

TECHNICAL SUPPORT

InvivoGen USA (Toll-Free): 888-457-5873
 InvivoGen USA (International): +1 (858) 457-5873
 InvivoGen Europe: +33 (0) 5-62-71-69-39
 InvivoGen Asia: +852 3622-3480
 E-mail: info@invivogen.com