

# Validation data for Spike-S1-Fc

<https://www.invivogen.com/sars2-spike-s1-proteins>

For research use only

Version 20109-NJ

Spike-S1-Fc is a soluble SARS-CoV-2 fusion protein generated by fusing the full-length Spike S1 subunit (V16-R685) to a C-terminal human IgG1-Fc tag with a TEV (Tobacco Etch Virus) sequence linker. This fusion protein has a molecular weight of ~124kDa on a SDS PAGE gel (Figure 1). The recognition of the Spike-S1-Fc protein by an Anti-SARS-CoV-Spike human IgM (clone CR3022) has been verified by ELISA (Figure 2).

## Spike-S1-Fc purity analysis by SDS PAGE

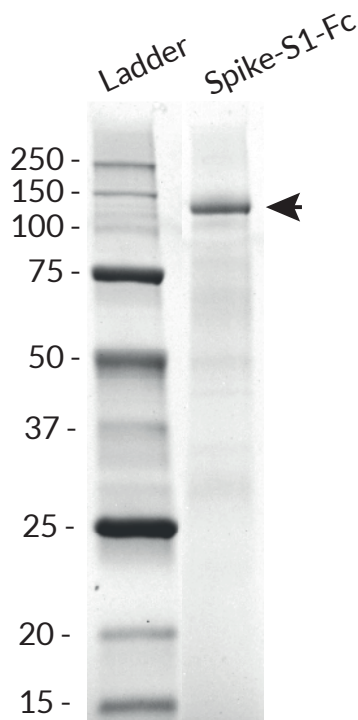


Figure 1: SDS PAGE analysis of the SARS-CoV-2 Spike-S1-Fc protein. 2 µg of the fusion protein was loaded onto a 12% Mini-PROTEAN® TGX Stain-Free™ Precast Gel (Bio-Rad). Detection was performed as per manufacturer's instructions.

## Recognition of Spike-S1-Fc by an Anti-SARS-CoV-Spike (CR3022) human IgM

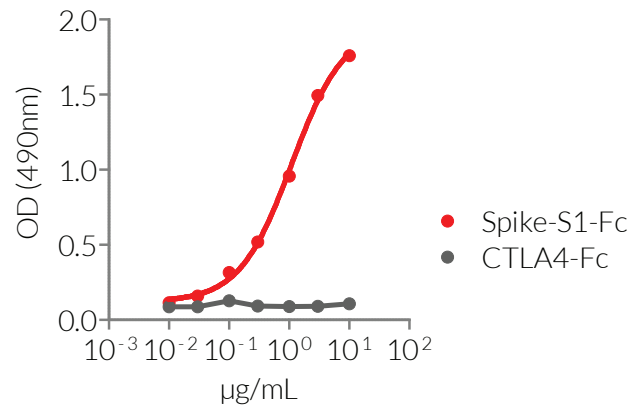


Figure 2: ELISA detection of Spike-S1-Fc fusion protein with an Anti-SARS-CoV spike human IgM (CR3022). Anti-SARS-CoV-Spike hIgM antibody (5 µg/ml) was coated onto ELISA plates overnight. Following this, a 3-fold serial dilution of Spike-S1-Fc (red curve) or control protein (CTLA4-Fc; grey curve) were added and incubated for 1 hour. Binding was detected using a HRP-labelled anti-His antibody (1/1000 dilution) and the HRP substrate OPD (o-phenylenediamine dihydrochloride). Absorbance was read at 490 nm.

### TECHNICAL SUPPORT

InvivoGen USA (Toll-Free): 888-457-5873  
InvivoGen USA (International): +1 (858) 457-5873  
InvivoGen Europe: +33 (0) 5-62-71-69-39  
InvivoGen Hong Kong: +852 3-622-34-80  
E-mail: [info@invivogen.com](mailto:info@invivogen.com)