

Validation data for Spike-RBD-Fc

<https://www.invivogen.com/sars2-spike-proteins-fc>

For research use only

Version 21K17-NJ

Spike-RBD-Fc is a soluble SARS-CoV-2 fusion protein generated by fusing the Spike Receptor Binding Domain (RBD; a.a. 319-541) to a C-terminal human IgG1 Fc tag with a TEV (Tobacco Etch Virus) sequence linker. This fusion protein has a molecular weight of ~59 kDa on a SDS PAGE gel (Figure 1). The recognition of the Spike-RBD-Fc protein by an Anti-SARS-CoV-Spike human IgM (clone CR3022) has been verified by ELISA (Figure 2).

Spike-RBD-Fc analysis by SDS PAGE

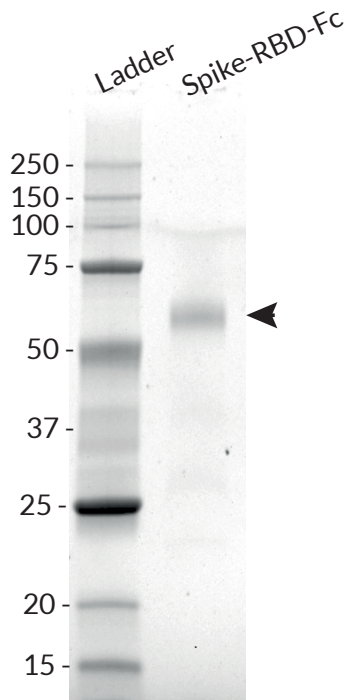


Figure 1: SDS PAGE analysis of the Spike-RBD-Fc protein. 1 μ g of the fusion protein was loaded on a 12% Mini-PROTEAN® TGX Stain-Free™ Precast Gels (Bio-Rad). Detection was performed as per manufacturer's instructions.

Recognition of Spike-RBD-Fc by an Anti-SARS-CoV-Spike human IgM

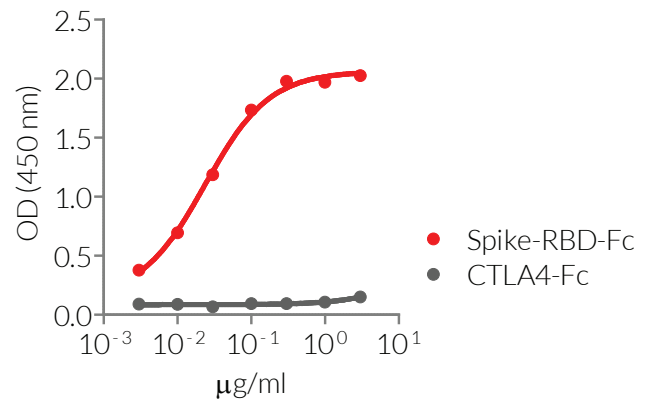


Figure 2: ELISA detection of the SARS-CoV-2 Spike-RBD-Fc fusion protein with the Anti-SARS-CoV-Spike human IgM. Anti-SARS-CoV-Spike hlgM antibody (5 μ g/ml) was coated on ELISA plates overnight. A 3-fold serial dilution of Spike-RBD-Fc (red curve) or of CTLA4-hFc control protein (grey curve) was performed for the capture step. A HRP-labelled anti-hFc antibody (1/1000 dilution) and the HRP substrate OPD (o-phenylenediamine dihydrochloride) were used for the detection step. Absorbance was read at 490 nm.

TECHNICAL SUPPORT

InvivoGen USA (Toll-Free): 888-457-5873
InvivoGen USA (International): +1 (858) 457-5873
InvivoGen Europe: +33 (0) 5-62-71-69-39
InvivoGen Asia: +852 3-622-34-80
E-mail: info@invivogen.com