

Validation data for RAW-Lucia™ ISG-KO-IRF7 cells

For research use only

Version # 16C15-MM

RAW-Lucia™ ISG-KO-IRF7 cells were generated from the RAW-Lucia™ ISG cell line through the stable knockout of the IRF7 gene. These cells derive from the murine RAW 264.7 macrophage cell line, which has been reported to express many pattern recognition receptors (PRRs), including TLR7, TLR9, and TLR13. The knockout of the IRF7 gene in RAW-Lucia™ ISG-KO-IRF7 cells has been confirmed by PCR (see figure 1) and sequencing.

PCR AMPLIFICATION

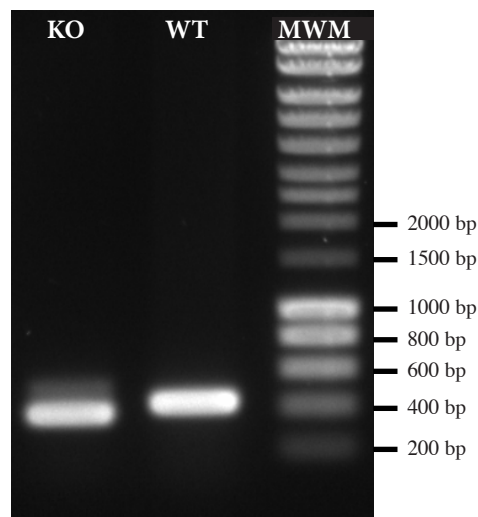


Figure 1: PCR amplification of the targeted region in the RAW-Lucia™ ISG-KO-IRF7 (KO) and RAW-Lucia™ ISG (WT) cells. MWM = molecular weight marker

TECHNICAL SUPPORT

InvivoGen USA (Toll-Free): 888-457-5873

InvivoGen USA (International): +1 (858) 457-5873

InvivoGen Europe: +33 (0) 5-62-71-69-39

InvivoGen Hong Kong: +852 3-622-34-80

E-mail: info@invivogen.com