

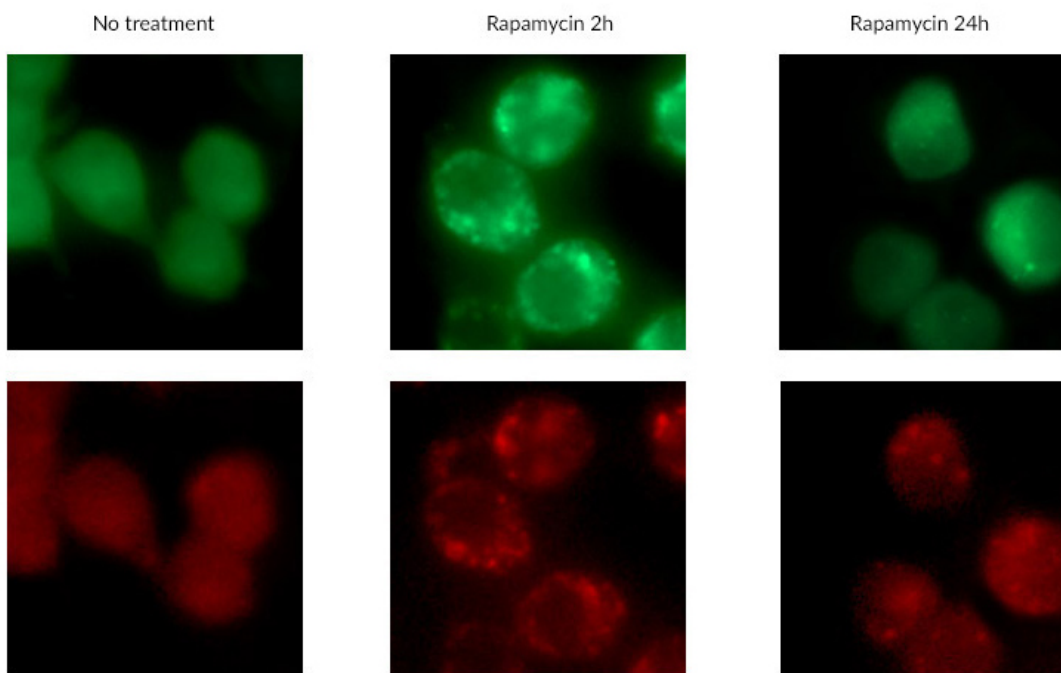
Validation data for RAW-Difluo™ mLC3 cells

<http://www.invivogen.com/raw-difluo-mlc3>

For research use only

Version 18C01-MM

Detection of autophagic fluorescent puncta



Fluorescent microscopy images of rapamycin-induced autophagosomes in RAW-Difluo™ mLC3 cells.

Cells were treated with rapamycin (25 μ M for 2 hours) a commonly used autophagy inducer. Following this treatment, culture medium was changed and cells were incubated for a further 22 hours. Fluorescence microscopic analysis was performed at different time points (2 and 22 hours post-treatment). Autophagosomes were visualized in the treated cells as both green (GFP) and red (RFP) puncta.

TECHNICAL SUPPORT

InvivoGen USA (Toll-Free): 888-457-5873
InvivoGen USA (International): +1 (858) 457-5873
InvivoGen Europe: +33 (0) 5-62-71-69-39
InvivoGen Hong Kong: +852 3622-3480
E-mail: info@invivogen.com