

Validation data for Raji-hLAG3 Cells

<https://www.invivogen.com/raji-hlag3>

For research use only

Version 20L15-ED

Raji-hLAG3 cells were developed from the Raji cell line to overexpress the human LAG3 gene. Raji-hLAG3 cells were designed as target cells for use in InvivoGen's antibody-dependent cellular cytotoxicity (ADCC) assay for screening clinically-relevant anti-human LAG3 monoclonal antibodies (mAbs). Expression of human LAG3 by Raji-hLAG3 cells has been verified by flow-cytometry (Figure 1).

Validation of LAG3 expression by flow cytometry

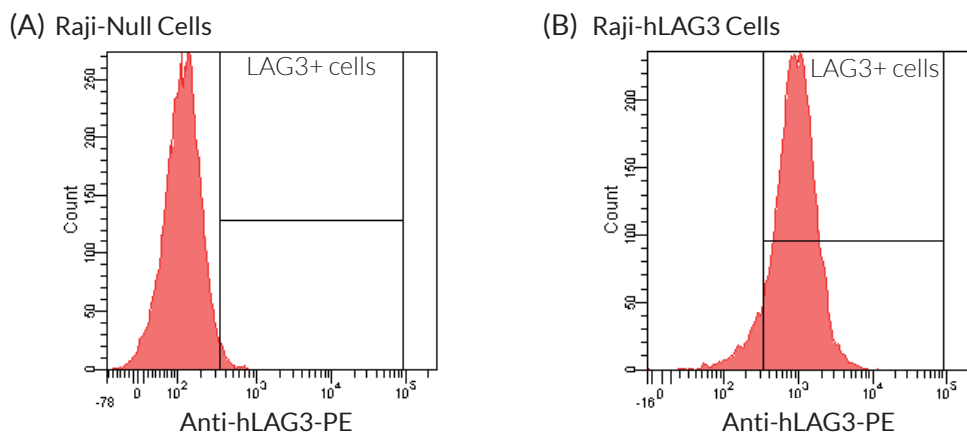


Figure 1: Validation of the expression of human LAG3 by Raji-hLAG3 cells. Raji-Null (A) and Raji-hLAG3 (B) cells were incubated with a PE-conjugated Anti-hLAG3 mAb for 30 minutes. The binding affinity was then measured using flow cytometry.

TECHNICAL SUPPORT

InvivoGen USA (Toll-Free): 888-457-5873
InvivoGen USA (International): +1 (858) 457-5873
InvivoGen Europe: +33 (0) 5-62-71-69-39
InvivoGen Hong Kong: +852 3622-3480
E-mail: info@invivogen.com

 **InvivoGen**
www.invivogen.com