

Validation data for Raji-APC-Null Cells

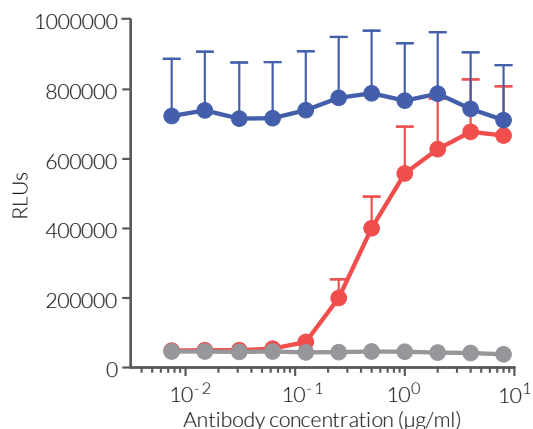
<https://www.invivogen.com/raji-apc-null>

For research use only

Version 21D15-NJ

Raji-APC-Null cells have been designed as a **control antigen-presenting cell line** for InvivoGen's PD-1/PD-L1 Bio-IC™. These cells were engineered from the human B lymphocyte-derived Raji cell line. They were stably transfected to express a specific [HLA::peptide] complex, providing a cognate TCR stimulation on Jurkat-Lucia™ TCR-hPD-1 cells. Raji-APC-Null cells do not provide PD-L1 inhibitory interaction to co-cultured Jurkat-Lucia™ TCR-hPD-1 effector cells, which thus express the NFAT-inducible Lucia luciferase reporter at maximal levels (**Figure 1**).

Activation of Jurkat-Lucia TCR-hPD-1 cells using Raji-APC-Null or Raji-APC-hPD-L1 antigen-presenting cells



Jurkat-Lucia™ TCR-hPD-1 cell co-culture with:

- Raji-APC-Null cells + Anti-hPD-1 hIgG1
- Raji-APC-hPD-L1 cells + Anti-hPD-1 hIgG1
- Raji-APC-hPD-L1 cells + Anti-βGal hIgG1

Figure 1: Activation of Jurkat-Lucia™ TCR-hPD-1 cells. Raji-APC-Null or Raji-APC-hPD-L1 cells were co-cultured with Jurkat-Lucia™ TCR-hPD-1 cells and gradient concentrations of Anti-hPD-1 hIgG1 or Anti-β-Gal hIgG1 mAbs for 6 hours. NFAT activation, reflecting the blockade of PD-1/PD-L1 inhibitory interaction, was assessed by determining Lucia luciferase activity in the supernatant using QUANTI-Luc™. Relative Light Units (RLUs) are shown.

TECHNICAL SUPPORT

InvivoGen USA (Toll-Free): 888-457-5873
InvivoGen USA (International): +1 (858) 457-5873
InvivoGen Europe: +33 (0) 5-62-71-69-39
InvivoGen Asia: +852 3622-3480
E-mail: info@invivogen.com



Any questions about our cell lines?
Visit our FAQ page.

 **InvivoGen**
www.invivogen.com