

# Validation data for Anti-hCD20-Ga-hIgG1

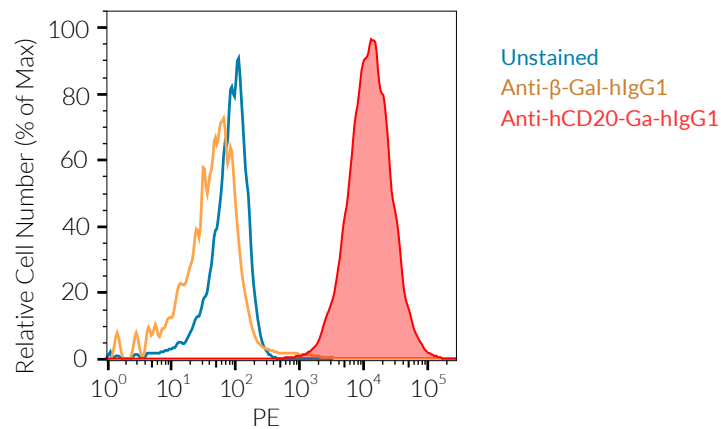
<https://www.invivogen.com/anti-hd20ga-higg1>

For research use only

Version 23K28-AK

Anti-hCD20-Ga-hIgG1 is a recombinant monoclonal antibody (mAb) featuring the human (h) CD20-targeting variable region and the hIgG1 constant region of the clinical relevant mAb obinutuzumab. CD20 is a transmembrane phosphoprotein that is expressed on the surface of both resting and activated B lymphocytes. Thus, it is a useful marker for B-cell lymphoma. The detection of hCD20 by Anti-hCD20-Ga-hIgG1 has been verified by flow cytometry using hCD20-overexpressing cells (Figure 1).

## Binding of Anti-hCD20-Ga-hIgG1 mAb to hCD20



**Figure 1. Binding of Anti-hCD20-Ga-hIgG1 mAb to hCD20.** EL4-hCD20 cells were incubated for 30 minutes at 4°C with 500 ng of Anti-hCD20-Ga-hIgG1 or an isotype control. Subsequently, a secondary PE-labeled antibody was added and incubated at 4°C for 30 minutes. The binding affinity was assessed using flow cytometry.

### TECHNICAL SUPPORT

InvivoGen USA (Toll-Free): 888-457-5873

InvivoGen USA (International): +1 (858) 457-5873

InvivoGen Europe: +33 (0) 5-62-71-69-39

InvivoGen Asia: +852 3-622-34-80

E-mail: [info@invivogen.com](mailto:info@invivogen.com)