

# Validation data for hACE2-Fc

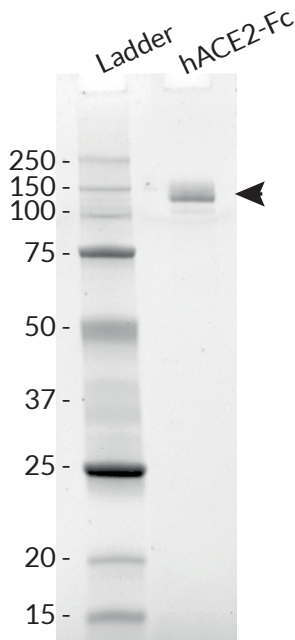
<https://www.invivogen.com/human-ace2-protein>

For research use only

Version 20F25-NJ

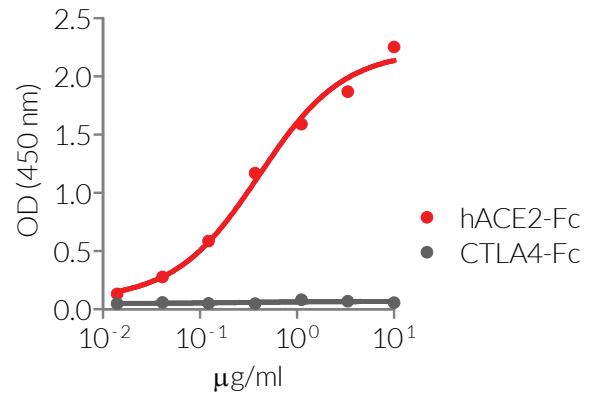
hACE2-Fc is a soluble human ACE2 fusion protein generated by fusing the ACE2 extracellular domain (a.a. 1-740) to a C-terminal human IgG1 Fc tag with a TEV (Tobacco Etch Virus) sequence linker. This fusion protein has a molecular weight of ~130 kDa on a SDS PAGE gel (Figure 1), and it has been functionally validated by ELISA using a coated SARS-CoV-2 Spike-RBD-His protein (Figure 2).

## hACE2-Fc analysis by SDS PAGE



**Figure 1: SDS PAGE analysis of the hACE2-Fc protein.** 0.5  $\mu$ g of the fusion protein was loaded on a 12% Mini-PROTEAN® TGX Stain-Free™ Precast Gels (Bio-Rad). Detection was performed as per manufacturer's instructions.

## Binding of hACE2-Fc to Spike-RBD-His



**Figure 2: ELISA detection of the SARS-CoV-2 Spike RBD with the soluble hACE2-Fc protein.** SARS-CoV-2 Spike-RBD-His fusion protein (10  $\mu$ g/ml) was coated on ELISA plates overnight. A 3-fold serial dilution of hACE2-Fc (red curve) or of CTLA4-hFc control protein (grey curve) was performed for the capture step. A HRP-labelled anti-hFc antibody (1/1000 dilution) and the HRP substrate OPD (o-phenylenediamine dihydrochloride) were used for the detection step. Absorbance was read at 490 nm.

### TECHNICAL SUPPORT

InvivoGen USA (Toll-Free): 888-457-5873  
InvivoGen USA (International): +1 (858) 457-5873  
InvivoGen Europe: +33 (0) 5-62-71-69-39  
InvivoGen Hong Kong: +852 3-622-34-80  
E-mail: [info@invivogen.com](mailto:info@invivogen.com)