

Validation data for Anti-hCD20-Of-hIgG1

<https://www.invivogen.com/anti-hd20of-higg1>

For research use only

Version 23K28-AK

Anti-hCD20-Of-hIgG1 is a recombinant monoclonal antibody (mAb) featuring the human (h) CD20-targeting variable region and the hIgG1 constant region of the clinical relevant mAb ofatumumab. CD20 is a transmembrane phosphoprotein that is expressed on the surface of both resting and activated B lymphocytes. Thus, it is a useful marker for B-cell lymphoma. The detection of hCD20 by Anti-hCD20-Of-hIgG1 has been verified by flow cytometry using hCD20-overexpressing cells (**Figure 1**).

Binding of Anti-hCD20-Of-hIgG1 mAb to hCD20

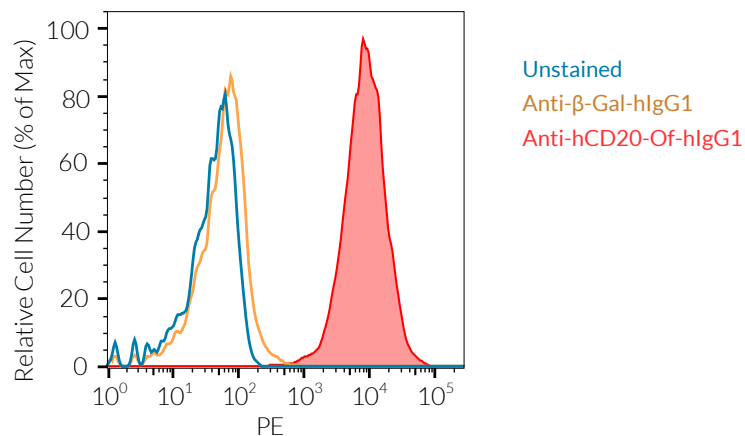


Figure 1. Binding of Anti-hCD20-Of-hIgG1 mAb to hCD20. EL4-hCD20 cells were incubated for 30 minutes at 4°C with 500 ng of Anti-hCD20-Of-hIgG1 or an isotype control. Subsequently, a secondary PE-labeled antibody was added and incubated at 4°C for 30 minutes. The binding affinity was assessed using flow cytometry.

TECHNICAL SUPPORT

InvivoGen USA (Toll-Free): 888-457-5873

InvivoGen USA (International): +1 (858) 457-5873

InvivoGen Europe: +33 (0) 5-62-71-69-39

InvivoGen Asia: +852 3-622-34-80

E-mail: info@invivogen.com